

# Compare volume

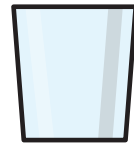
1 Here are three glasses.



A



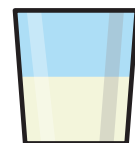
B



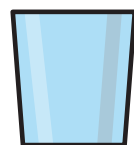
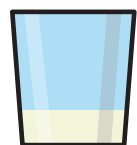
C

- a) Which glass is empty? C
- b) Which glass is half full? B
- c) Which glass is full? A

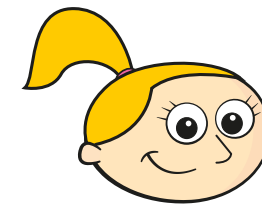
2 Tommy has some milk in a glass.



Circle all the glasses that have more milk than Tommy's.

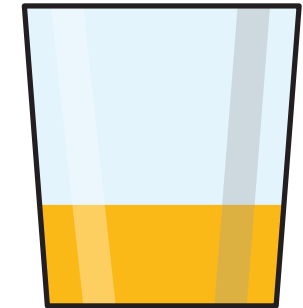


3 Eva, Ron and Amir have some juice.

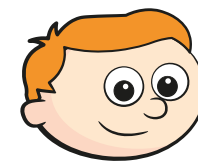


This is my juice.

Eva



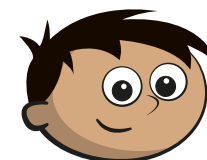
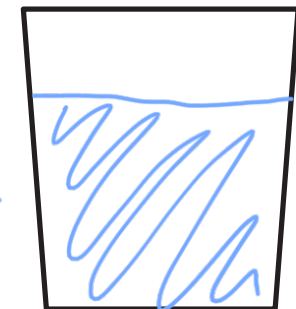
Shade the glasses to show how much juice Ron and Amir could have.



I have more juice than Eva.

Ron

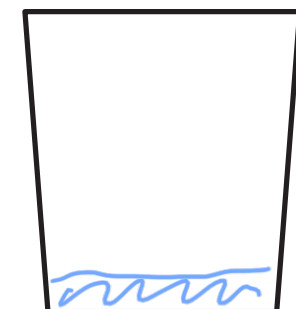
e.g.



I have less juice than Eva.

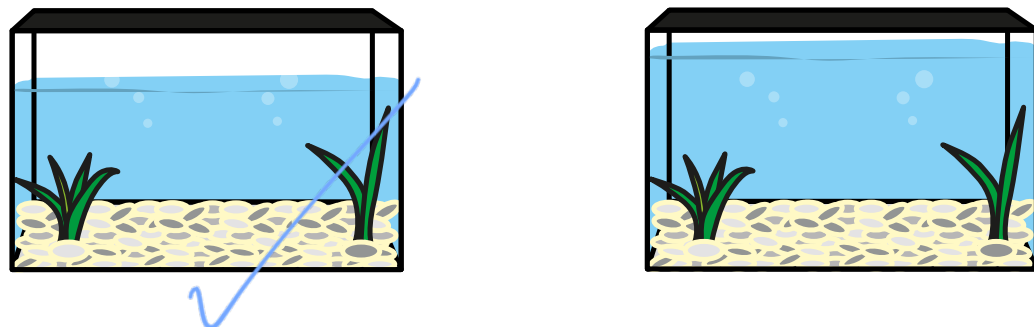
Amir

e.g.

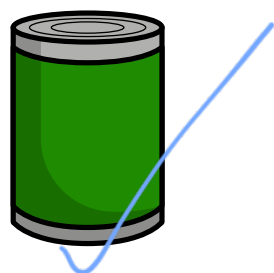


Compare answers with a partner.

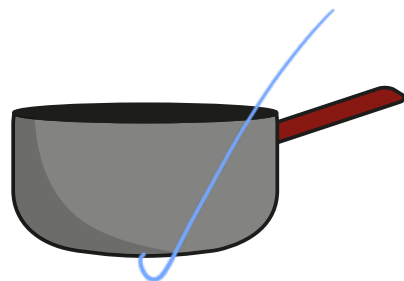
- 4 Which fish tank contains less water?  
Tick your answer.



- 5 Tick the object with the greater capacity.



- 6 Tick the object with the greatest capacity.



- 7 Put these objects in order of how much water they can hold.  
Start with the object that has the smallest capacity.



A



B



C

C                      A                      B

---

smallest                      greatest

- 8 Whitney says B contains more water than A.



A



B

Why might Whitney think this?  
What could she do to check?