

Hathern Church of England Primary School



Medication Policy & Management Procedures



This document is produced in conjunction with the Leicestershire Partnership Trusts. We would like to acknowledge input from professional bodies and services with Leicestershire County, City and Rutland. We would also draw your attention to the appendices listed on the Schools EIS for access and information relating to Individual Care Plans and specific medical needs/conditions. This document is revised in line with the current Department for Education 'Supporting pupils at School with medical conditions' 2014, which replaces the previous Managing medicines in Schools and early years settings 2005.

MEDICATION POLICY

The Board of Governors and staff of Hathern CofE Primary School wish to ensure that pupils with medication needs receive appropriate care and support at School. The Headteacher will accept responsibility for members of the school staff giving or supervising pupils taking medication during the School day. Where possible, pupils should be encouraged to self-administer under supervision. It must be stressed that where prescription drugs are administered it shall be by those members of staff that have volunteered. It should **not** automatically be assumed that a qualified First Aider will fulfil this role.

- Staff will not give a prescribed/non prescribed medicine or care unless there is specific written consent from parents
- An individual care plan should be drawn up for the pupil
- A secondary check must be made prior to medication being taken / given
- **The School will not accept items of medication in unlabelled containers**

PROCEDURES

- In the first instance, the Head Teacher should be informed of an individual's diagnosis and associated medication (prescribed and non-prescribed)
- An appropriate member of staff will meet and discuss the issues with the parents/guardian of the pupil
- *The member of staff volunteering will be offered professional training and support in relation to the needs of the individual by a suitably competent person. (This maybe by a qualified trained nurse should)*
- There will be regular review meetings scheduled to monitor the support required should the requirement be long term

RESPONSIBILITIES

Parents/Guardian Responsibility

- A comprehensive information guide specifically relating to the pupils condition and medication must be recorded
- Only reasonable quantities of medication should be supplied to the School (eg, maximum 4 weeks at any one time)
- Notification of changes in prescription drug issued by GP must be directly given to School by Parent/Guardian
- Parent/Guardian to collect and restock medication from School at the end and start of every term in a secure labelled container as originally dispensed
- **Parent/Guardian to ensure the medication is in date for the duration of the term**

School Responsibility

- Medication will be kept in a known safe secure place (not necessarily locked away) and some drugs may require refrigeration
- Where emergency medication is prescribed this must remain near to the pupil at all times. E.g. Epipen, Asthma inhalers
- Maintain and record dosage prescribed/administered
- Identify if additional training needs are required for staff. Source and arrange training
- Locate and record care plan for individual identifying supporting staff
- **If a medical emergency develops activate the relevant procedures and call 999**

- Each term a nominated member in school to check emergency medicines are in date and note the expiry date to avoid expired medication during the term. There needs to be a clear audit trail of this
- The school should encourage parent / guardian to make a note of expiry dates of medication

G.P/Consultant/Medical Professional Responsibility

Prescriptive labelled drugs must contain:

- Pupils name
- Name of medication
- Dosage
- Frequency of administration
- Date of dispensing
- Storage requirements (if important) ie, refrigeration
- Expiry Date

Consent Form.

See appendix A - contained within this document for completion.

Individual Care Plan.

See appendix 'B' on Schools EIS system under 'A' Administration of medicines

Review Date: September 2016

General Care Plan/ Parent/Guardian/Carer CONSENT FORM
(Request for administration of medicines)

TO: Headteacher of Hathern Church of England Primary School

FROM: Parent/Guardian of.....*full name of Child*

DATE:

My child has been diagnosed as having:
(name of condition)

He/she has been considered fit for school but requires the following medicine to be administered during school hours:

(name of medication) (strength)

I allow/do not allow my child to carry out self administration *(delete as appropriate)*

Could you please therefore supervise/administer the medication as indicated above in the following dosage.....*(dosage)* at.....*(timed)* with effect from.....
.....until advised otherwise.

- I undertake to update the school with any changes in routine, use or dosage or emergency medication and to maintain an in date supply of prescribed medication
- I undertake to maintain an in date supply of the medication
- I understand that the school cannot undertake to monitor the use of self administered medication of that carried by the child and that the school is not responsible for any loss of/or damage to any medication
- I understand that if I do not allow my child to carry the medication it will be stored by the School and administered by staff with the exception of emergency medication which will be near the child at all times
- I understand that staff may be acting voluntarily in administering medicines to children and that they will be acting in the best interests of the child

Signed.....

Date:.....

Name of parent (please print).....

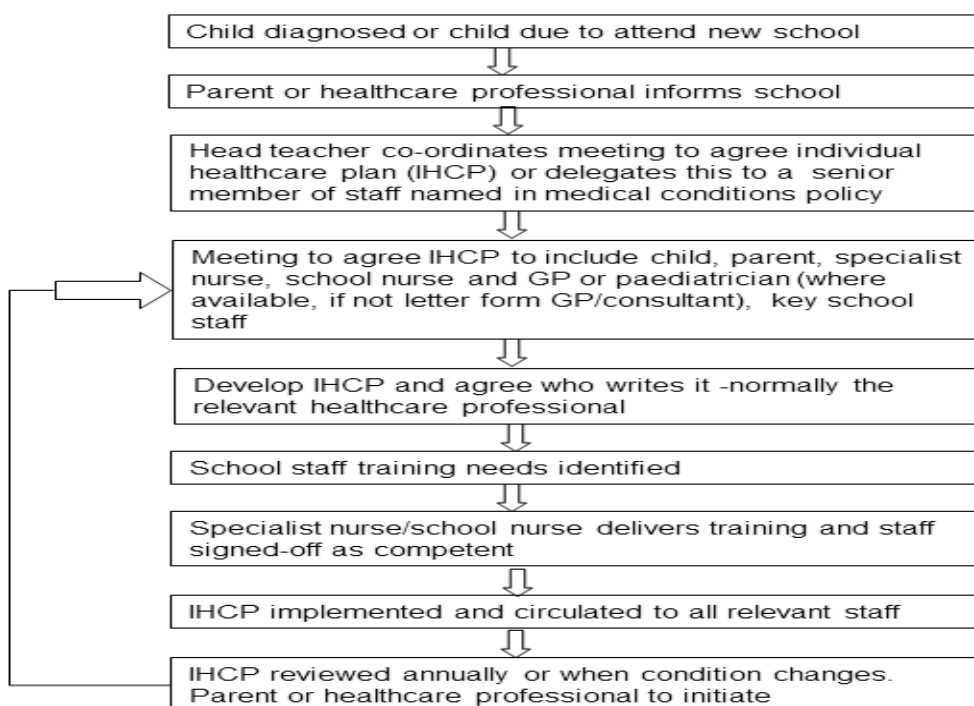
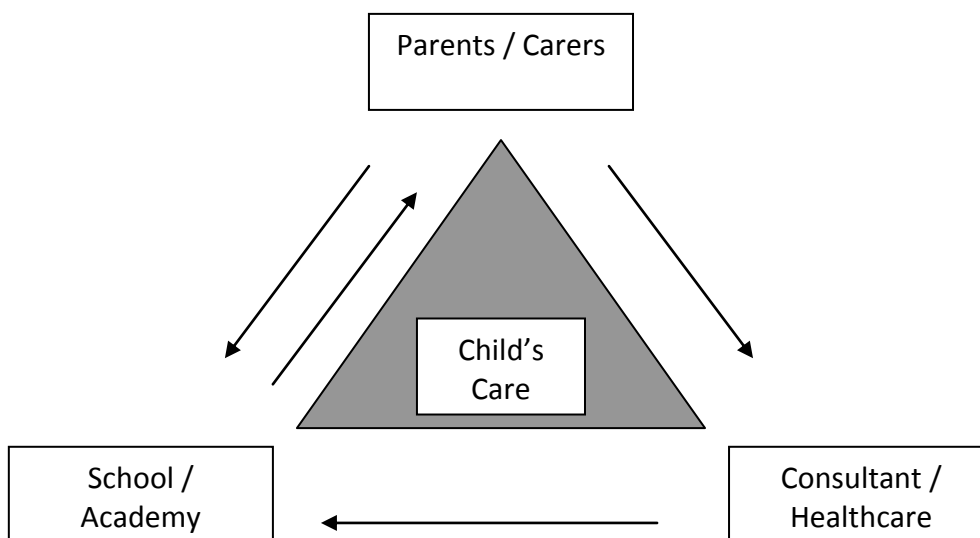
Contact Details:

Home.....Work:.....Mobile:.....



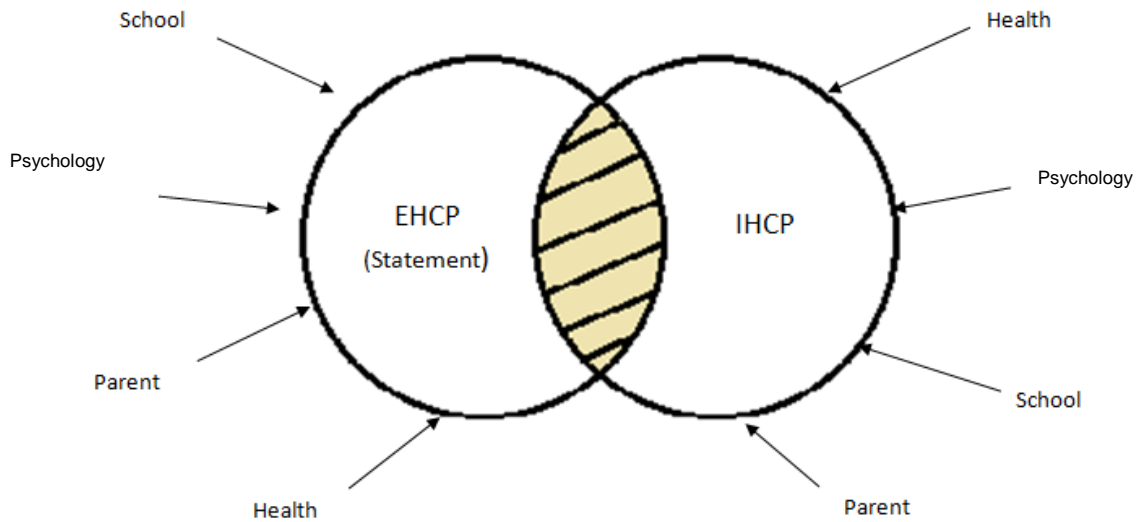
Appendix B – IHCP See appendix ‘B’ on Schools EIS system under ‘A’ Administration of medicines

Individual Health Care Plan (IHCP) = Specific information on individual pupil requirements. Written recorded plan will ensure that their needs are met whilst in school and any treatment needed to be administered by members of staff will be fully understood. Plan to be agreed by Head teacher and parents. THIS MUST BE FORMALLY RECORDED AND REVIEWED AT REGULAR INTERVALS. A template/proforma is available for download on the Schools EIS system under ‘A’ Administration of medicines, see appendices.



Some children with medical conditions may have physical disabilities. Where this is the case governing bodies **MUST** comply with their duties under the Equality Act 2010. Some may have special educational needs (SEN) and may have a statement or Education Health Care plan which will bring together health and social care needs, as well their special educational provision.

Educational Health Care Plan



EHCP

“This is the new statement of educational needs and may incorporate the need for specialist medicines”.

IHCP

“Individual health care plans – is direction for managing emergency or specialist medicines given”.

ADVICE ON MEDICAL CONDITIONS

The Community Paediatrician or Nurse on request will give advice regarding medical conditions to the school. Parents or guardians of children suffering from these conditions seeking general information should be advised to seek advice from their G.P., the school health professionals or from the bodies detailed below. The following bodies can also supply leaflets regarding the conditions listed.

<p>Asthma at school – a guide for teachers</p> <p>National Asthma Campaign</p> <p>www.asthma.org.uk</p> <p>Asthma Helpline – Tel: 0800 121 6244</p>	
<p>Guidance for teachers concerning Children who suffer from fits</p> <p>www.epilepsy.org.uk</p> <p>Helpline No: 0808 800 5050</p> <p>www.helpline@epilepsy.org.uk</p>	<p>See appendix C ‘Epilepsy Health forms’ under ‘A’ Administration of medicines’ for Individual Care Plans and relevant records of information and documentation.</p>
<p>Guidelines for Infections (e.g. HIV, AIDS and MRSA)</p> <p>Public Health England</p> <p>Tel: 0344 225 4524</p>	
<p>Haemophilia</p> <p>info@haemophilia.org.uk</p> <p>Tel: 020 7831 1020</p>	
<p>Allergies Anaphylaxis Campaign</p> <p>www.anaphylaxis.org.uk</p> <p>Help line 01252 542029</p>	<p>See appendix D ‘Emergency Action Plan’ forms under ‘A’ Administration of medicines for Epipen/Jext Pens administration. Please note the needs to report administration of this medication to Bridge Park Plaza on fax no: 0116 258 6694</p>
<p>Thalassaemia</p> <p>www.ukts.org</p> <p>email: information or office@ukts.org</p> <p>Tel: 020 8882 0011</p>	

<p>Sickle Cell Disease</p> <p>info@sicklecellsociety.org</p> <p>Tel: 020 8961 7795</p>	
<p>Cystic Fibrosis and School (A guide for teachers and parents)</p> <p>www.cftrust.co.uk</p> <p>Tel: 020 84647211</p>	
<p>Children with diabetes (Guidance for teachers and school staff)</p> <p>www.diabetes.org.uk</p> <p>Leicester Royal Infirmary 9 am – 5 pm Diabetes Office</p> <p>0116 2586796 Diabetes Specialist Nurses 0116 2587737 Consultant Paediatric</p>	<p>See appendix E on EIS under ‘A’ administration of medicines documentation.</p> <p>Please note the opportunity to attend diabetes in Schools training day – regularly advertised on EIS. This is funded by Diabetes UK and is supported by our team of specialist consultants and nurses.</p>
<p>Diabetes Careline Services</p>	<p>Tel: 0345 1232399</p>
<p>Insurance Section Leicestershire County Council</p> <ul style="list-style-type: none"> • Additional insurance • Concerns 	<p>Contacts: -</p> <p>David Marshall-Rowan – 0116 305 7658 James Colford – 0116 305 6516</p>
<p>County Community Nursing Teams:</p> <ul style="list-style-type: none"> • Information on School nurses <p><u>East Region</u> – Market Harborough/Rutland/Melton</p> <p><u>West Region</u> – Hinckley/Bosworth/Charnwood</p>	<p><u>East Region</u></p> <p>PA: 1) Janet Foster 01858 438109 PA: 2) Clare Hopkinson 01664 855069</p> <p>Locality managers: 1) Maureen Curley 2) Jane Sansom</p> <p><u>West Region</u></p> <p>PA: Sally Kapasi 01509 410230</p> <p>Locality managers: Chris Davies Teresa Farndon</p>
<p>Corporate Health, Safety & Wellbeing Leicestershire County Council County Hall, Glenfield, Leics. LE3 8RF</p>	<p>Tel: 0116 305 5515</p> <p>healthandsafety@leics.gov.uk</p>

Appendices for information and completion can be sought from the Schools EIS system under 'A' for Administration of medicines.

As below:

Appendix A	Parental Consent form for medicines (contained within this document)
Appendix B	Individual Health Care Plan (IHCP) for pupils – complete at School (contained within this document)
Appendix C	Epilepsy Health and record forms from Health professionals
Appendix D	Emergency Action Plans for Anaphylaxis from Health professionals
Appendix E	Diabetes Health forms from Health professionals
Appendix F	'Supporting pupils at School with medical conditions' DfE document

This document has been reviewed in line with current up to date legislation and with the support of the Leicestershire partnership groups / healthcare professionals – August 2015.

Summary of Updates:

Template of policy reviewed - to be made relevant to site / establishment – Aug 2014

Appendices made available on EIS for specific medical needs / conditions – Aug 2014

Contact details and tel no's updated.

Anaphylactic details updated from health – new fax No: updated – 0116 258 6694 – Aug 2015